

Technical Note:

GemSafe 4.2.0 Software Download Instructions

1 Prerequisites

The following points should be noted prior to commencing the installation of the updated GemSafe software:

- Local Administration rights on the appropriate PC.
- The installation of GemSafe Libraries 4.2.0 does not automatically uninstall previous versions of GemSafe Libraries older than 4.0. You must ensure that you have downloaded the latest version of the GemSafe software before you attempt to download your new DECS certificate, the software will be required in order to access the replacement smartcard you have received.
- As with all software installs and upgrades it is recommended that a backup of the PC is taken prior to install any software.
- During installation or removal of the GemSafe software, the Smartcard Reader should be connected to the PC and not have a smart card in it
- The installation of the GemSafe software will require 30 megabytes of available disk space.
- The latest GemSafe software is compatible with the following operating systems and memory configurations.

Operating System	RAM
Windows 2003 Server	138MB
Windows XP Professional (up to sp2)	64MB
Windows XP Home (up to sp2)	64MB
Windows 2000 Professional (sp3 or sp4)	64MB
Windows 2000 server	96MB

The GemSafe software is also compatible with the following operating systems however these systems are reaching the end of their lifecycles and configuration is reliant on specific software updates. If you chose to install the GemSafe software on one of the following systems you do so at you own risk and will not be eligible to receive support for the installation process.

Operating System	RAM
Windows 98 SE	32MB
Windows ME	64MB
Windows NT 4.0 (sp6 or higher)	64MB

2 Downloading the new GemSafe Libraries

1. Using an Internet browser, navigate to the following url:

<https://dtpregistration.trustis.com/software/gemsafe420.zip>

You will be presented with the following windows requesting a user name and password.



Figure 1: Certificate option

Enter the username “gemsafe” and the password that you were provided with in the documentation supplied with your smart card.

2. Once you have successfully authenticated, you are presented with the following windows select the option to save.



Figure 2: File download options

Save the file to a location and make a note of the location for the installation process for use later.

3 Removing Previous Versions of GemSafe Libraries

Note: Do not uninstall the previous version of the GemSafe software until you have downloaded the new version of the GemSafe software.

To remove the previous version of the GemSafe Libraries follow the instructions below. Please be aware that you will require local Administration rights to uninstall the GemSafe software.

1. Navigate to the Add/Remove Programs tool and locate GemSafe Libraries in the list of programs available this will be operating system specific but typically through the /Start/Settings/Control Panel or /start/Control panel.
2. Open the Control Panel and click on GemSafe Libraries in the Add/Remove Programs dialog.

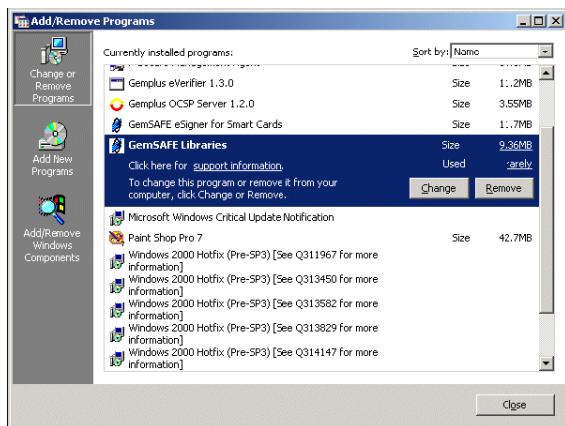


Figure 1 - Add/Remove Programs Window

3. Click Remove. The following window appears:

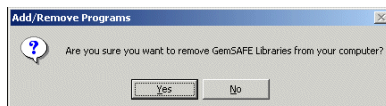


Figure 2 - Remove GemSafe Libraries Confirmation Dialog

4. Click Yes to confirm the removal of the GemSafe Libraries.
5. You may view the progress in the Setup Progress dialog.

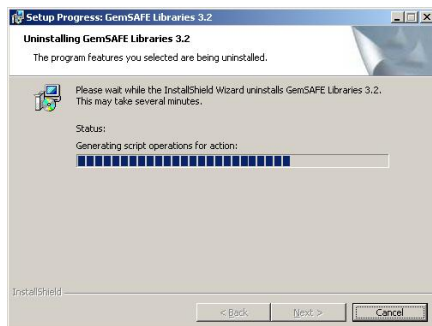


Figure 3 - Add/Remove Programs Removal Progress Window

6. The Setup Progress dialog shows the progress of the program removal. When it closes, removal is complete and the GemSafe Libraries is removed from your computer.

7. If prompted, please reboot your computer.
8. The previous version of the smart card reader software is now removed.

4 To install the new GemSafe Libraries 4.2.0

This section describes how to install GemSafe Libraries.

Note: Please ensure the previous version of GemSafe Libraries has been uninstalled and the reader does not have a smart card in it.

1. Navigate to the location of the installation file saved from the download in section 2 on the hard drive and double click on the file. The file is a compressed file in zip format and can be opened using the embedded Windows XP system or WinZip. Using either method double clicking on the file will open the compressed files.
2. Once the zip file is open and the contents displayed, extract all of the files to a location on your hard disk e.g. c:\temp and when the extract is complete navigate to that location. Open the directory containing the extracted files and locate the setup.exe file and run the software setup.
3. The GemSafe Libraries InstallShield Wizard will start and display several messages until the following window is displayed.

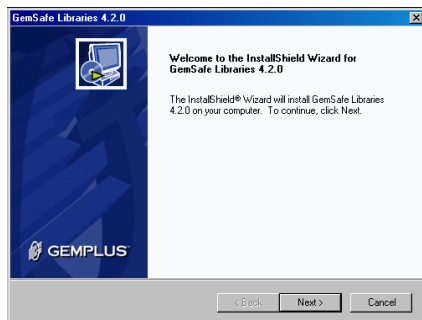


Figure 5 - InstallShield Wizard Welcome Window

Click Next to continue.

4. The GemSafe Libraries InstallShield Wizard displays the License Agreement window.

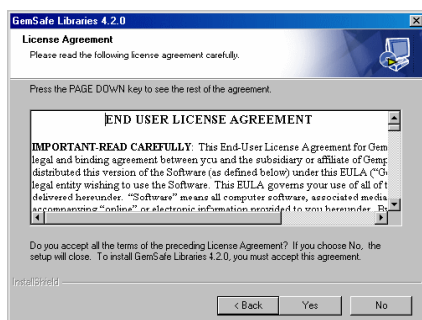


Figure 6 - InstallShield Wizard License Agreement Window

Read the GemSafe License Agreement and click on Yes to continue

5. The GemSafe InstallShield Wizard will display the Choose Destination Location window.

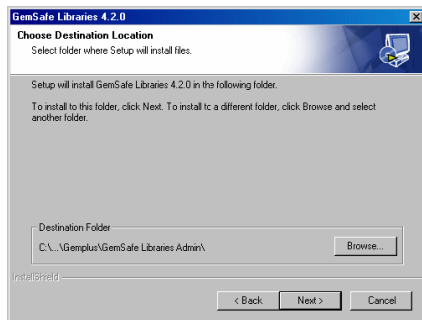


Figure 7 - InstallShield Wizard Choose Destination Location Window

Review the location choice made for you or use the Browse function to choose another location and click Next.

6. You will be then be assisted throughout the installation by the GemSafe InstallShield Wizard, which will present you with a series of dialogs similar to the following. These dialogs simply inform you as each of the components is automatically installed.

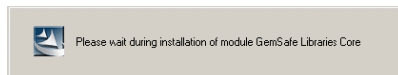


Figure 8 - InstallShield Wizard Progress Dialog

7. Once the GemSafe InstallShield Wizard has completed, the following dialog appears.

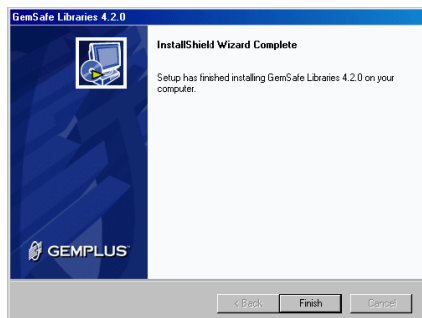


Figure 9 - InstallShield Wizard Complete Window

6. Click Finish to complete the installation, the GemSafe InstallShield Wizard will now display the Reboot Dialog.



Figure 10 - InstallShield Wizard Reboot Dialog

7. Click Yes to restart the system immediately or No if you want to restart your computer later.

Note: You will not be able to use the GemSafe Libraries software until you have restarted your computer.

GemSafe Libraries 4.2.0 sp2 is now installed on the computer and you are ready to use your new smartcard.